



ALEC SOTH: *PARIS / MINNESOTA*



Alec Soth: *Paris / Minnesota*

July 29 – October 2, 2021

Nemeth Art Center

Artist Statment:

In 2007 I started work on a large scale fashion project. The idea was to produce an entire fashion magazine of my own pictures, including the ads. The art director wanted me to shoot in Paris. On my first day I was scheduled to photograph backstage at a Dior runway show. I'd never been to a fashion show before and didn't understand the backstage politics. Within an hour I was thrown out by security.

The more I worked in Paris, the more aware I was of my identity as a lifelong Minnesotan. Rather than being ashamed of this, I wanted to make it part of the project. Fashion is simply the way we present ourselves to the world. For me, the fashion choices of someone in Duluth are as worthy of investigation as those of someone in Paris. I'd go further and say I feel this way about culture generally.

Like countless photographers, from Atget in Paris to Walker Evans in Alabama, I'm more interested in the vernacular than I am in the de rigueur. With this exhibition at the Nemeth Art Center, I want to highlight this interest by exhibiting the photographs near where many of them were made.

MAIN GALLERY



Alec Soth

Dynell, Bemidji, Minnesota, 2007

Edition of 8, plus 3 artist's proofs

Archival pigment print

40 x 32 inches, image size

48 x 40 inches, paper size

\$16,200.00



Alec Soth

Akeley Regional Community Center, 2007

Edition of 7, plus 3 artist's proofs

Archival pigment print

40 x 50 inches, image size

48 x 58 inches, paper size

Sold Out Edition



Alec Soth

*Members of the Lumberjacks, Bemidji High School's
Varsity Girls Basketball Team, 2007*

Chromogenic process print

8 x 10 inches, image

16 x 20 inches, framed

NFS



Alec Soth

(Untitled), 2007

Chromogenic process print

8 x 10 inches, image

16 x 20 inches, framed

NFS



Alec Soth

(Untitled), 2007

Chromogenic process print

8 x 10 inches, image (each)

16 x 20 inches, framed

NFS



Alec Soth

Marie, Park Rapids, Minnesota, 2007

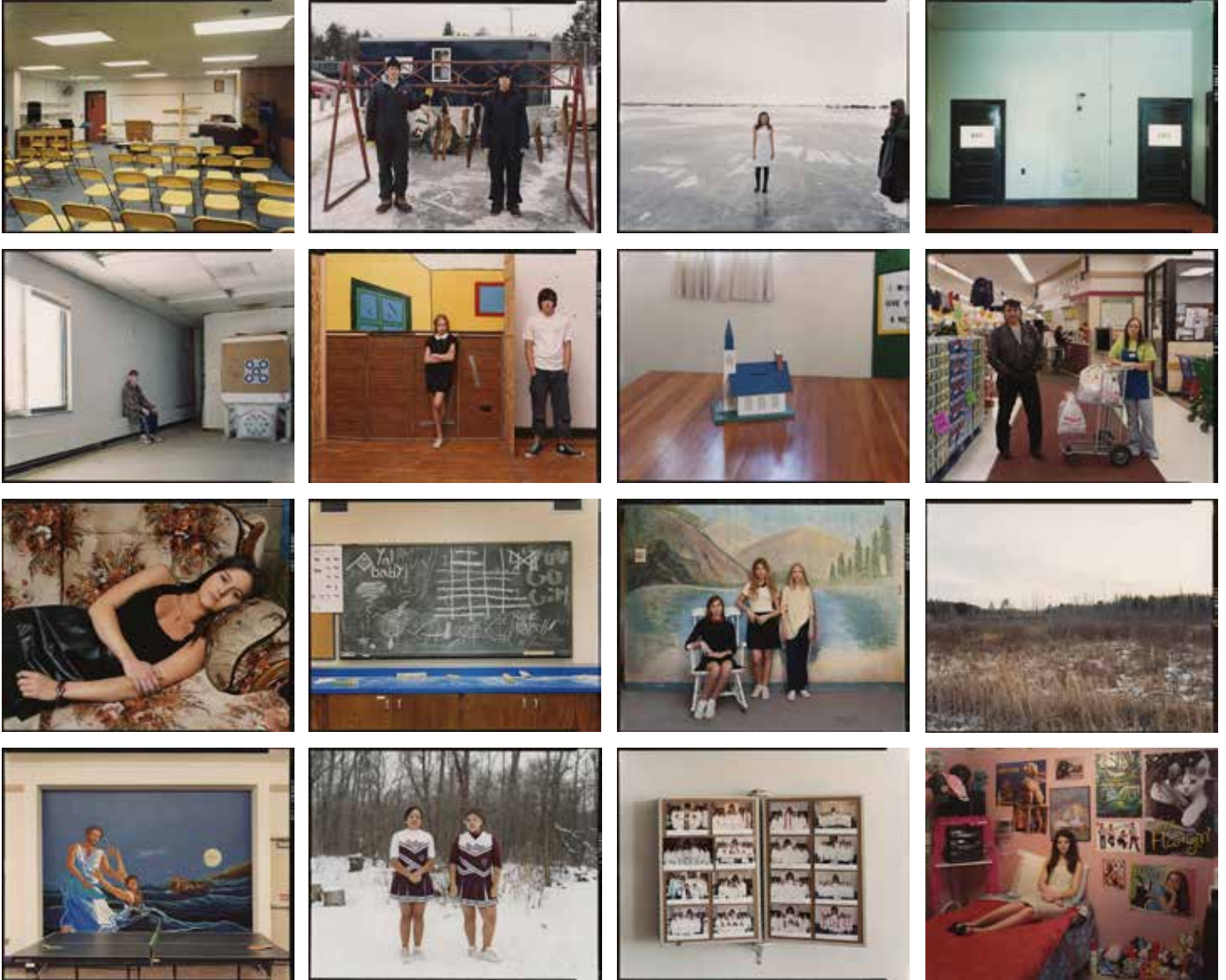
Edition of 7, plus 3 artist's proofs

Archival pigment print

32 x 40 inches, image size

40 x 48 inches, paper size

\$16,200.00



Alec Soth

16 *Paris / Minnesota* process prints, 2007

Chromogenic process prints

16 x 20 inches (framed, each)

NFS



Alec Soth

F.L., 2007

Edition of 7, plus 3 artist's proofs

Archival pigment print

30 x 24 inches, image size

36 x 30 inches, paper size

\$10,750.00



Alec Soth

Akeley, Minnesota, 2007

Edition of 7, plus 3 artist's proofs

Archival pigment print

40 x 50 inches, image size

48 x 58 inches, paper size

Sold Out Edition



Alec Soth

Kristin, St. Paul, Minnesota, 2007

Edition of 7, plus 3 artist's proofs

Archival pigment print

50 x 40 inches, image size

58 x 48 inches, paper size

\$25,700.00



Alec Soth

Eelpout Festival, 2007

Edition of 7, plus 3 artist's proofs

Archival pigment print

40 x 50 inches, image size

48 x 58 inches, paper size

\$21,700.00



Alec Soth

Ronald, 2007

Edition of 7, plus 3 artist's proofs

Archival pigment print

40 x 32 inches, image size

48 x 40 inches, paper size

\$16,200.00



Alec Soth

Stephen, 2007

Archival pigment print

Edition of 7, plus 3 artist's proofs

40 x 32 inches, image size

48 x 40 inches, paper size

\$16,200.00



Alec Soth

12 *Paris / Minnesota* process prints, 2007

Chromogenic process prints

20 x 16 inches (framed, each)

NFS

ARTIST BIO:

Alec Soth

Alec Soth (b. 1969) is a photographer born and based in Minneapolis, Minnesota. He has published over twenty-five books including *Sleeping by the Mississippi* (2004), *NIAGARA* (2006), *Broken Manual* (2010), *Songbook* (2015) and *I Know How Furiously Your Heart is Beating* (2019). Soth has had over fifty solo exhibitions including survey shows organized by Jeu de Paume in Paris (2008), the Walker Art Center in Minnesota (2010) and Media Space in London (2015). Soth has been the recipient of numerous fellowships and awards, including the Guggenheim Fellowship (2013). In 2008, Soth created Little Brown Mushroom, a multi-media enterprise focused on visual storytelling. Soth is represented by Sean Kelly in New York, Weinstein Hammons Gallery in Minneapolis, Fraenkel Gallery in San Francisco, Loock Galerie in Berlin, and is a member of Magnum Photos.

This activity is made possible by the generous support of our members, sponsors, and Minnesota voters through grants from the Region 2 Arts Council, thanks to legislative appropriation from the Arts and Culture Heritage Fund.

Additional thanks to Ethan Jones, Weinstein Hammons Gallery, Emily Beaman, the Nemeth board and volunteers, and of course, Alec Soth for helping bring this show and its accompanying material to life.

Visit us online at www.nemethartcenter.org for additional archival content from current and past exhibitions.



Nemeth Art Center